

POSI ONE

1.50kN **FRAMELESS** glass **BALUSTRADE**

Contents

POSione INTRODUCTION	04
POSione KEY BENEFITS	05
TECHNICAL DRAWINGS	06
INSTALLATION GUIDE	08
PRODUCT RANGE	10
ACCREDITATIONS	12

One-side-fit, **Adjustable** frameless glass balustrade for **domestic** to **commercial** environments



INTRODUCTION

POSlone our most technically advanced aluminium balustrade systems, benefiting you with single sided adjustment.

POSlone is able to achieve up to 1.50kN line load resistance when used with glass panels up to 1200mm high, making it a highly adaptable balustrade system suitable for use as edge protection in both domestic and commercial installations.

Learning from our **POSiglaze** product and from extensive market research, this system adjusts using an easy sliding method and utilising our patented screw-clamp technology, whereby one screw against the side of the glass clamp locks the glass into position. This combination enables up to a 20mm tilt in the glass from one side to the other. This means that when fitting the channel to an uneven surface,

the angle of the channel can be countered by the adjustment of the glass.

POSlone has been designed with installers in mind. This means that it is simple to change the glass at any time, if required.

The one-side-fit version of our popular balustrade systems, **POSlone** is compatible with a wide range of finishing accessories including 90 and 135-degree pre-fabricated corners and **Balcony Seal®**. The **POSlone** channel is available in silver brushed and black brushed Aluminium in **Base-Fix**.



ONE-SIDE-FIT

One of the most simple balustrade systems to fit and adjust thanks to its patented screw-clamp technology. One-side-fit reducing cost, safety equipment and Glass can easily be removed and replaced if required.

ACCREDITED TO 1.50kN TO BS 6180:2011

POSione is accredited and approved by multiple organisations to verify that it meets national and international building regulations for use as edge protection, where up to 1.50kN force loading is required.

Lightweight and strong

Precision engineered using extruded aluminum with a geometrically hollowed out core; providing an incredible strength to weight ratio. For added protection **POSione** is anodised to 25 microns.

APPROPRIATE FOR DOMESTIC AND COMMERCIAL

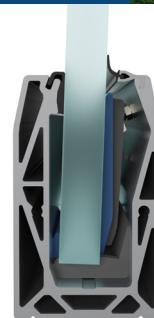
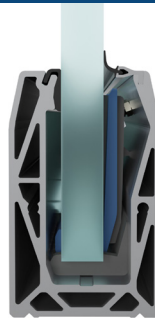
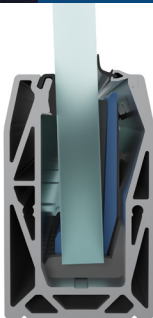
With 0.36kN to 1.50kN force loading capability, **POSione** is a domestic to commercial crossover product, making it an appropriate choice for a wide range of installations.

CAN BE USED WITH A WIDE RANGE OF GLASS TYPES

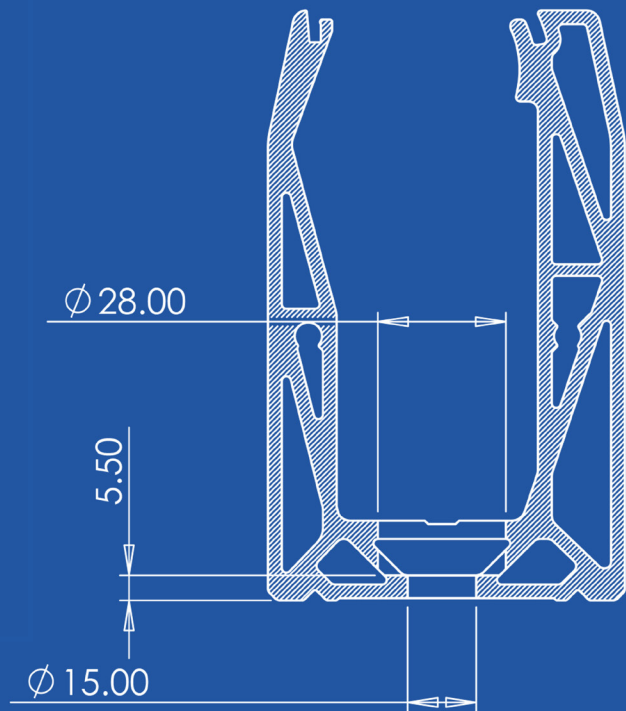
POSione is a highly versatile product which can be used with glass thicknesses ranging from 12mm - 21.5mm, using either toughened glass, toughened laminate glass or SentryGlas.

SUITABLE FOR USE ON UNEVEN SURFACES

POSione benefits from one-side-fit screw-clamp technology that provides a 20mm adjustment angle on the glass, enabling perfect alignment of each glass panel. This adjustment capability is illustrated in the diagrams below.

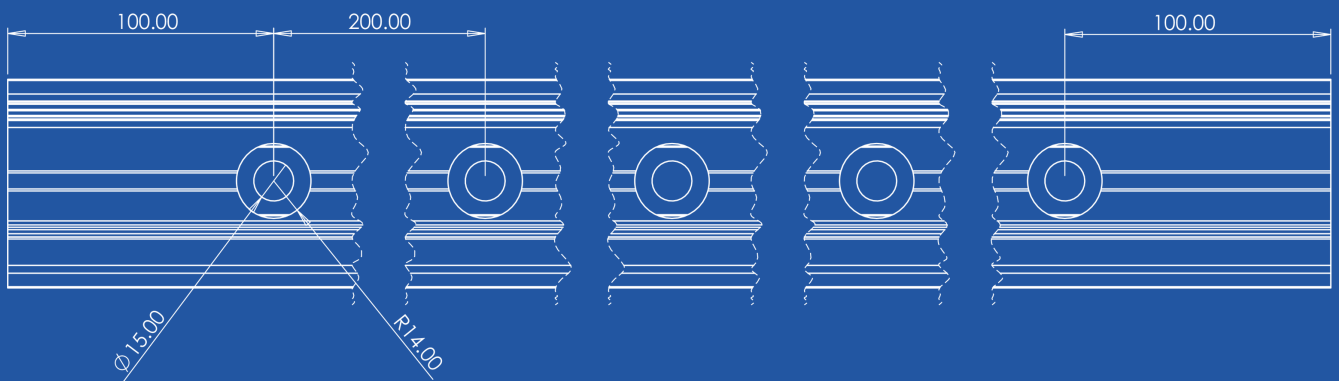


TECHNICAL DRAWINGS

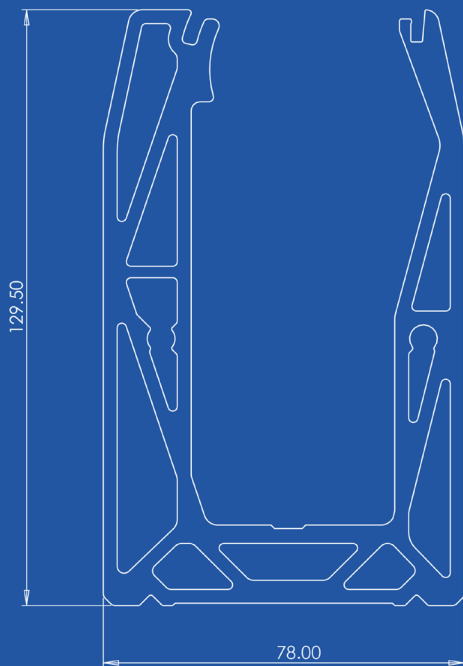


1.

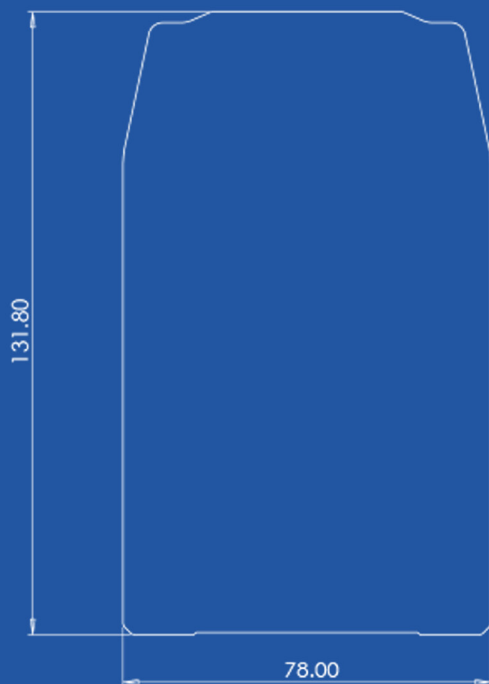
2.



3. 4.



5.



1. POSlone base mounted bolt hole dimensions

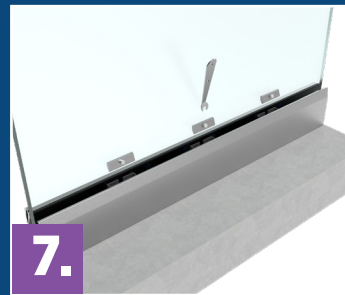
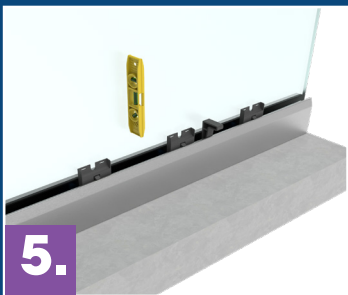
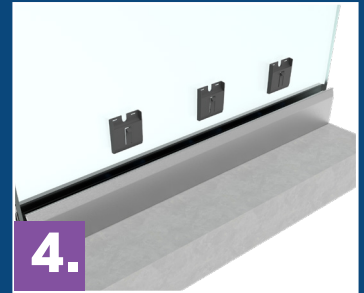
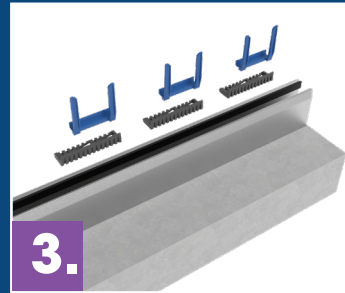
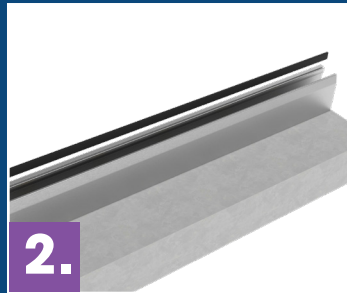
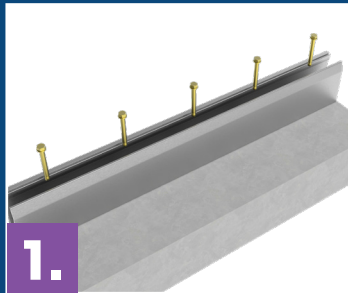
2. POSlone bolt hole centres

3. POSlone channel dimensions

4. POSlone exploded diagram

5. End Cap

INSTALLATION GUIDE



These step by step instructions guide you through the installation process.

1. FIT THE CHANNEL

Drill bolt holes into your substrate starting at 100mm from the first edge and then at 200mm intervals thereafter. Lay the channel on top aligning the channel holes with your drilled holes. Fix in place with an appropriate screw or bolt.

2. ADJUSTMENT BEAD

Attach the ridged adjustment bead to outer edge.

3. ISOLATOR AND SLIDER

Place the isolator and slider into the channel with the

wings on the inside and the slider positioned to the right side of the isolator.

4. FIT THE GLASS

Place the glass into the channel.

5. INSERT CLAMPS

Insert one wedge tool at each end of the glass and push the clamps down until they reach the clip. Ensure the clamps are within the slider wings.

6. ADJUST THE GLASS

Manoeuvre the glass into position by hand. Next, slide the clamps to the left so the slider is tight in the required position.

7. SECURE THE GLASS

Push the clamps down into the channel.

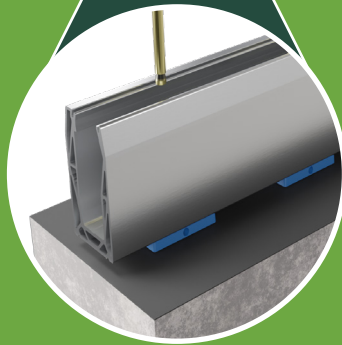
8. BOLTS & BARS

Insert the clamp bars and bolts and tighten them against the channel by unwinding the bolt.

9. FINISH THE INSTALLATION

Add the top bead, gasket and end caps to finish the installation.

PRODUCT RANGE



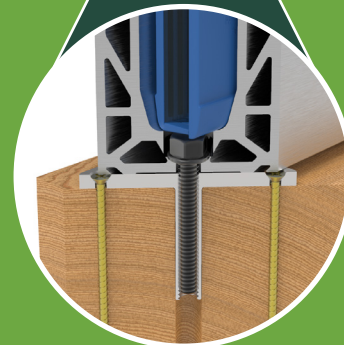
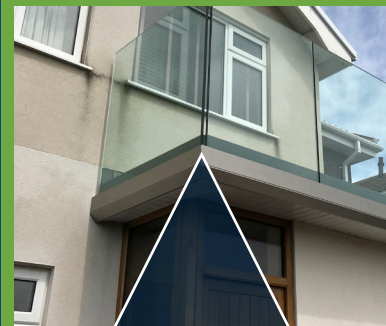
POSlone is compatible with BalconySeal in base mount channel.

✓ **SILVER BRUSHED**

A silver brushed stainless steel effect aluminum channel with matching accessories. Available in side or base mount; the side mounted channel comes in a natural finish.

✓ **BASE MOUNT**

The most popular fixing choice is a base-mounted channel, fixed to your concrete or steel substrate through drill holes in the base of the channel.



Available in both black brushed and silver brushed finishes.

✓ **Coming soon**

Side-fixed POSlone has already been developed and is going through testing.

POSlone base fix will be available in Black brushed.

POSlone base fix will also be tested for use with the Timber Fixing Plate in 2023.



1.



2.



3.



4.



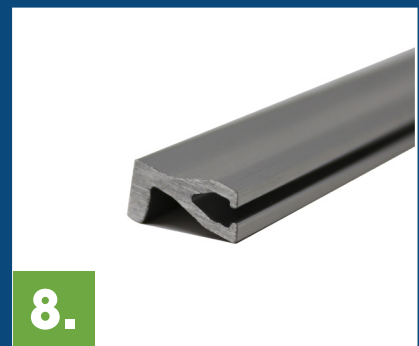
5.



6.



7.



8.

1. Balcony Seal Kit
2. Silver brushed end cap
3. Slider & isolator
4. Co-extruded gasket
5. Channel joining dowels
6. Timber Fixing Plate
7. Drain block
8. Silver brushed insert top bead

ACCREDITATIONS



The table below shows the line loading that POSIone is certified to achieve.

These tests have been conducted in accordance with **BS6180:2011** to certify that **POSIone** meets the force loading requirement under this British standard for a range of glass height and thickness configurations.

		Glass Type >	12mm Toughened Glass		13.5mm SentryGlas		15mm Toughened Glass		17.5mm Toughened PVB		19mm Toughened Glass		21.5mm Toughened PVB		21.5mm SentryGlas	
			1100	1200	1100	1200	1100	1200	1100	1200	1100	1200	1100	1200	1100	1200
0.36kN Line Load	Base Mounted	Concrete	200mm Bolt Holes													
			400mm Bolt Holes													
		Steel	200mm Bolt Holes													
			400mm Bolt Holes													
0.74kN Line Load	Base Mounted	Concrete	200mm Bolt Holes													
			400mm Bolt Holes													
		Steel	200mm Bolt Holes													
			400mm Bolt Holes													
		Timber*	200mm Bolt Holes													
			*using Timber Fixing Plates													
1.50kN Line Load	Base Mounted	Concrete	200mm Bolt Holes													
			400mm Bolt Holes													
		Steel	200mm Bolt Holes													
			400mm Bolt Holes													

